



Burns Residence

428 Sw Bradshaw Cir, Port St. Lucie, FL 34953

Solar

Quantity: 34 Panels

System Size: 11.56 kW

Est. Annual Production: 15945 kWh

Solar Order: Large

Reason Layout Does Not Match Order: Customer Request

Powerwall

Quantity: 1 Powerwall

Backup Type: Partial Home (AC Unit, Well Pump, Air Handler not backed up)

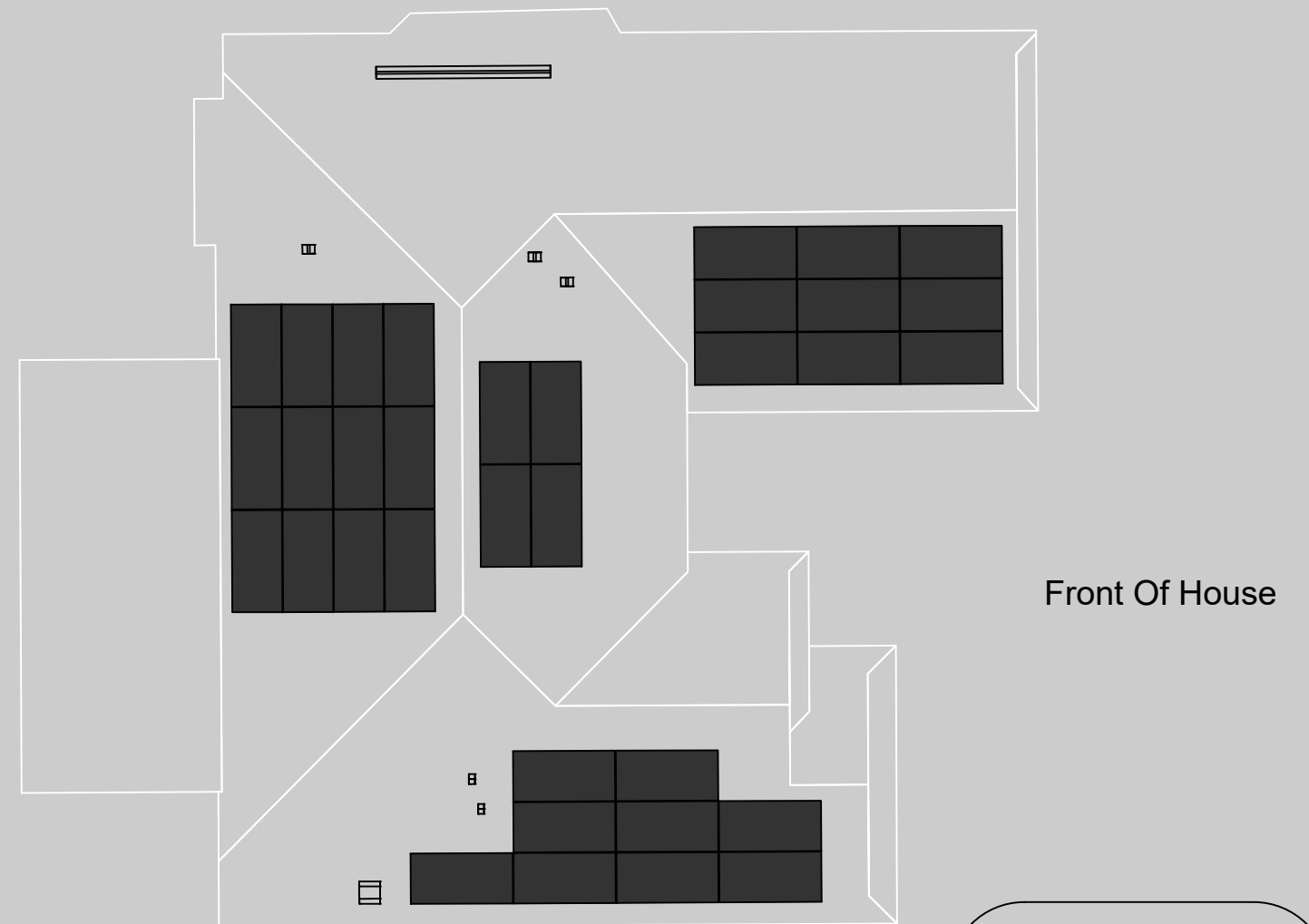
Equipment Location

Your solar inverter(s), Energy Gateway, Powerwall(s) and any additional equipment will be installed near your utility electric meter.

At the beginning of installation, the Tesla crew lead will discuss with you the exact location based on your preference and install feasibility.

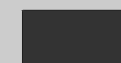


N



LEGEND

Solar Panels



Rooftop vents, skylights, chimneys, and HVAC





Single Phase Inverter with HD-Wave Technology

for North America

SE3000H-US / SE3800H-US / SE5000H-US / SE6000H-US / SE7600H-US / SE10000H-US / SE11400H-US



INVERTERS

Optimized installation with HD-Wave technology

- / Specifically designed to work with power optimizers
- / Record-breaking efficiency
- / Quick and easy inverter commissioning directly from a smartphone using the SolarEdge SetApp
- / Fixed voltage inverter for longer strings
- / Integrated arc fault protection and rapid shutdown for NEC 2014 and 2017, per article 690.11 and 690.12
- / UL1741 SA certified, for CPUC Rule 21 grid compliance
- / Extremely small
- / Built-in module-level monitoring
- / Outdoor and indoor installation
- / Optional: Revenue grade data, ANSI C12.20 Class 0.5 (0.5% accuracy)

/ Single Phase Inverter with HD-Wave Technology for North America

SE3000H-US / SE3800H-US / SE5000H-US / SE6000H-US / SE7600H-US / SE10000H-US / SE11400H-US

	SE3000H-US	SE3800H-US	SE5000H-US	SE6000H-US	SE7600H-US	SE10000H-US	SE11400H-US	
APPLICABLE TO INVERTERS WITH PART NUMBER	SEXXXXH-XXXXXBXX4							
OUTPUT								
Rated AC Power Output	3000	3800 @ 240V 3300 @ 208V	5000	6000 @ 240V 5000 @ 208V	7600	10000	11400 @ 240V 10000 @ 208V	VA
Maximum AC Power Output	3000	3800 @ 240V 3300 @ 208V	5000	6000 @ 240V 5000 @ 208V	7600	10000	11400 @ 240V 10000 @ 208V	VA
AC Output Voltage Min.-Nom.-Max. (211 - 240 - 264)	✓	✓	✓	✓	✓	✓	✓	Vac
AC Output Voltage Min.-Nom.-Max. (183 - 208 - 229)	-	✓	-	✓	-	-	✓	Vac
AC Frequency (Nominal)	59.3 - 60 - 60.5 ⁽¹⁾							Hz
Maximum Continuous Output Current @240V	12.5	16	21	25	32	42	47.5	A
Maximum Continuous Output Current @208V	-	16	-	24	-	-	48.5	A
Power Factor	1, adjustable -0.85 to 0.85							
GFDI Threshold	1							A
Utility Monitoring, Islanding Protection, Country Configurable Thresholds	Yes							
INPUT								
Maximum DC Power @240V	4650	5900	7750	9300	11800	15500	17650	W
Maximum DC Power @208V	-	5100	-	7750	-	-	15500	W
Transformer-less, Ungrounded	Yes							
Maximum Input Voltage	480							Vdc
Nominal DC Input Voltage	380				400			Vdc
Maximum Input Current @240V ⁽²⁾	8.5	10.5	13.5	16.5	20	27	30.5	Adc
Maximum Input Current @208V ⁽²⁾	-	9	-	13.5	-	-	27	Adc
Max. Input Short Circuit Current	45							Adc
Reverse-Polarity Protection	Yes							
Ground-Fault Isolation Detection	600k Ω Sensitivity							
Maximum Inverter Efficiency	99	99.2						%
CEC Weighted Efficiency	99						99 @ 240V 98.5 @ 208V	%
Nighttime Power Consumption	< 2.5							W

⁽¹⁾ For other regional settings please contact SolarEdge support

⁽²⁾ A higher current source may be used; the inverter will limit its input current to the values stated



/ Single Phase Inverter with HD-Wave Technology for North America

SE3000H-US / SE3800H-US / SE5000H-US / SE6000H-US/
SE7600H-US / SE10000H-US / SE11400H-US

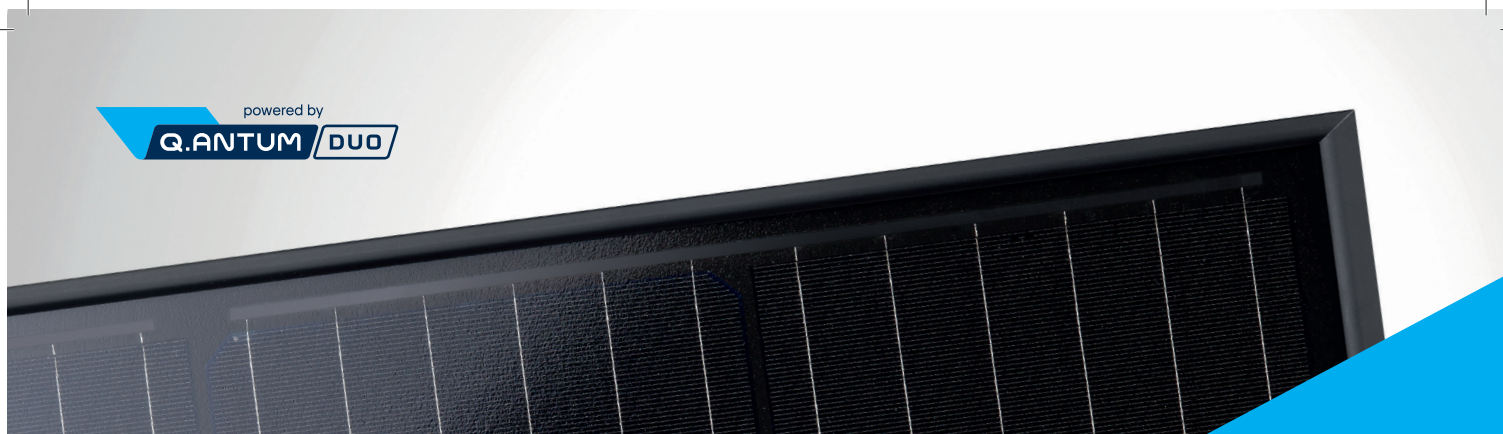
	SE3000H-US	SE3800H-US	SE5000H-US	SE6000H-US	SE7600H-US	SE10000H-US	SE11400H-US	
ADDITIONAL FEATURES								
Supported Communication Interfaces	RS485, Ethernet, ZigBee (optional), Cellular (optional)							
Revenue Grade Data, ANSI C12.20	Optional ⁽³⁾							
Inverter Commissioning	with the SetApp mobile application using built-in Wi-Fi station for local connection							
Rapid Shutdown - NEC 2014 and 2017 690.12	Automatic Rapid Shutdown upon AC Grid Disconnect							
STANDARD COMPLIANCE								
Safety	UL1741, UL1741 SA, UL1699B, CSA C22.2, Canadian AFCI according to T.I.L. M-07							
Grid Connection Standards	IEEE1547, Rule 21, Rule 14 (HI)							
Emissions	FCC Part 15 Class B							
INSTALLATION SPECIFICATIONS								
AC Output Conduit Size / AWG Range	3/4" minimum / 14-6 AWG			3/4" minimum /14-4 AWG				
DC Input Conduit Size / # of Strings / AWG Range	3/4" minimum / 1-2 strings / 14-6 AWG			3/4" minimum / 1-3 strings / 14-6 AWG				
Dimensions with Safety Switch (HxWxD)	17.7 x 14.6 x 6.8 / 450 x 370 x 174			21.3 x 14.6 x 7.3 / 540 x 370 x 185			in / mm	
Weight with Safety Switch	22 / 10	25.1 / 11.4	26.2 / 11.9	38.8 / 17.6			lb / kg	
Noise	< 25			<50				dBA
Cooling	Natural Convection							
Operating Temperature Range	-40 to +140 / -40 to +60 ⁽⁴⁾							°F / °C
Protection Rating	NEMA 4X (Inverter with Safety Switch)							

⁽³⁾ Revenue grade inverter P/N: SExxxH-US000BNC4

⁽⁴⁾ Full power up to at least 50°C / 122°F; for power de-rating information refer to: <https://www.solaredge.com/sites/default/files/se-temperature-derating-note-na.pdf>



powered by
Q.ANTUM DUO



Q.PEAK DUO BLK-G6+ / SC

330-345

ENDURING HIGH PERFORMANCE

ZEP COMPATIBLE™

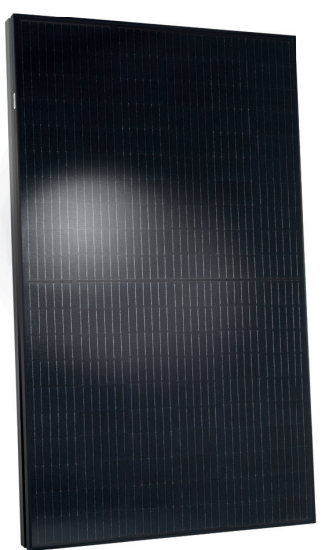
EUPD RESEARCH
TOP BRAND PV
MODULES
EUROPE
2019

Q CELLS
YIELD SECURITY
ANTI-PID TECHNOLOGY (APT)
HOT-SPOT PROTECT (HSP)
TRACEABLE QUALITY (TRA.Q™)
ANTI-LID TECHNOLOGY (ALT)

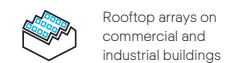
25
YEAR
Product and Performance Warranty
Q CELLS

- Q.ANTUM TECHNOLOGY: LOW LEVELIZED COST OF ELECTRICITY**
Higher yield per surface area, lower BOS costs, higher power classes, and an efficiency rate of up to 19.5%.
- INNOVATIVE ALL-WEATHER TECHNOLOGY**
Optimal yields, whatever the weather with excellent low-light and temperature behavior.
- ENDURING HIGH PERFORMANCE**
Long-term yield security with Anti LID and Anti PID Technology¹, Hot-Spot Protect and Traceable Quality Tra.Q™.
- ZEP COMPATIBLE™ FRAME DESIGN**
High-tech black Zep Compatible™ frame, for improved aesthetics, easy installation and increased safety.
- A RELIABLE INVESTMENT**
Inclusive 25-year product warranty and 25-year linear performance warranty².
- STATE OF THE ART MODULE TECHNOLOGY**
Q.ANTUM DUO combines cutting edge cell separation and innovative wiring with Q.ANTUM Technology.

¹ APT test conditions according to IEC/TS 62804-1:2015, method B (-1500V, 168h)
² See data sheet on rear for further information



THE IDEAL SOLUTION FOR:

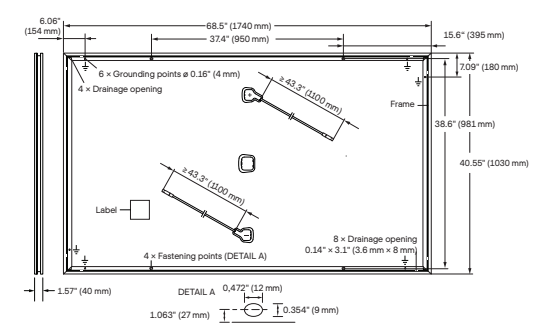


Engineered in Germany



MECHANICAL SPECIFICATION

Format	68.5 × 40.6 × 1.57 in (including frame) (1740 × 1030 × 40 mm)
Weight	47.4 lbs (21.5 kg)
Front Cover	0.13 in (3.2 mm) thermally pre-stressed glass with anti-reflection technology
Back Cover	Composite film
Frame	Black anodized aluminum
Cell	6 × 20 monocrystalline Q.ANTUM solar half cells
Junction Box	2.09-3.98 × 1.26-2.36 × 0.59-0.71 in (53-101 × 32-60 × 15-18 mm), Protection class IP67, with bypass diodes
Cable	4 mm ² Solar cable; (+) ≥ 43.3 in (1100 mm), (-) ≥ 43.3 in (1100 mm)
Connector	Stäubli MC4; IP68



ELECTRICAL CHARACTERISTICS

POWER CLASS		330	335	340	345	
MINIMUM PERFORMANCE AT STANDARD TEST CONDITIONS, STC ¹ (POWER TOLERANCE ±5 W / -0 W)						
Minimum	Power at MPP ¹	P _{MPP} [W]	330	335	340	345
	Short Circuit Current ¹	I _{SC} [A]	10.41	10.47	10.52	10.58
	Open Circuit Voltage ¹	V _{OC} [V]	40.15	40.41	40.66	40.92
	Current at MPP	I _{MPP} [A]	9.91	9.97	10.02	10.07
	Voltage at MPP	V _{MPP} [V]	33.29	33.62	33.94	34.25
	Efficiency ¹	η [%]	≥18.4	≥18.7	≥19.0	≥19.3
MINIMUM PERFORMANCE AT NORMAL OPERATING CONDITIONS, NMOT ²						
Minimum	Power at MPP	P _{MPP} [W]	247.0	250.7	254.5	258.2
	Short Circuit Current	I _{SC} [A]	8.39	8.43	8.48	8.52
	Open Circuit Voltage	V _{OC} [V]	37.86	38.10	38.34	38.59
	Current at MPP	I _{MPP} [A]	7.80	7.84	7.89	7.93
	Voltage at MPP	V _{MPP} [V]	31.66	31.97	32.27	32.57

¹ Measurement tolerances P_{MPP} ± 3%; I_{SC}; V_{OC} ± 5% at STC: 1000 W/m², 25 ± 2 °C, AM 1.5 according to IEC 60904-3 · 2800 W/m², NMOT, spectrum AM 1.5

Q CELLS PERFORMANCE WARRANTY

At least 98% of nominal power during first year. Thereafter max. 0.54% degradation per year. At least 93.1% of nominal power up to 10 years. At least 85% of nominal power up to 25 years.

All data within measurement tolerances. Full warranties in accordance with the warranty terms of the Q CELLS sales organization of your respective country.

PERFORMANCE AT LOW IRRADIANCE

Typical module performance under low irradiance conditions in comparison to STC conditions (25 °C, 1000 W/m²)

TEMPERATURE COEFFICIENTS							
Temperature Coefficient of I _{SC}	α	[%/K]	+0.04	Temperature Coefficient of V _{OC}	β	[%/K]	-0.27
Temperature Coefficient of P _{MPP}	γ	[%/K]	-0.36	Normal Module Operating Temperature	NMOT	[°F]	109 ± 5.4 (43 ± 3 °C)

PROPERTIES FOR SYSTEM DESIGN

Maximum System Voltage V _{sys}	[V]	1000 (IEC) / 1000 (UL)	Protection Class	II
Maximum Series Fuse Rating	[A DC]	20	Fire Rating based on ANSI / UL 1703	C (IEC) / TYPE 2 (UL)
Max. Design Load, Push / Pull (UL) ³	[lbs / ft ²]	50 (2400 Pa) / 50 (2400 Pa)	Permitted Module Temperature on Continuous Duty	-40 °F up to +185 °F (-40 °C up to +85 °C)
Max. Test Load, Push / Pull (UL) ³	[lbs / ft ²]	75 (3600 Pa) / 75 (3600 Pa)		

³ See Installation Manual

QUALIFICATIONS AND CERTIFICATES

UL 1703, CE-compliant, IEC 61215:2016, IEC 61730:2016, Application Class II, U.S. Patent No. 9,893,215 (solar cells)



Note: Installation instructions must be followed. See the installation and operating manual or contact our technical service department for further information on approved installation and use of this product.

Hanwha Q CELLS America Inc.
400 Spectrum Center Drive, Suite 1400, Irvine, CA 92618, USA | TEL +1 949 748 59 96 | EMAIL inquiry@us.q-cells.com | WEB www.q-cells.us

Specifications subject to technical changes © Q CELLS Q.PEAK DUO BLK-G6+SC_330-345_2019-11_Rev01_NA



POWERWALL

Tesla Powerwall is a fully-integrated AC battery system for residential or light commercial use. Its rechargeable lithium-ion battery pack provides energy storage for solar self-consumption, time-based control, and backup.

Powerwall's electrical interface provides a simple connection to any home or building. Its revolutionary compact design achieves market-leading energy density and is easy to install, enabling owners to quickly realize the benefits of reliable, clean power.



PERFORMANCE SPECIFICATIONS

AC Voltage (Nominal)	120/240 V
Feed-In Type	Split Phase
Grid Frequency	60 Hz
Total Energy ¹	14 kWh
Usable Energy ¹	13.5 kWh
Real Power, max continuous ²	5 kW (charge and discharge)
Real Power, peak (10s, off-grid/backup) ²	7 kW (charge and discharge)
Apparent Power, max continuous	5.8 kVA (charge and discharge)
Apparent Power, peak (10s, off-grid/backup)	7.2 kVA (charge and discharge)
Maximum Supply Fault Current	10 kA
Maximum Output Fault Current	32 A
Overcurrent Protection Device	30 A
Imbalance for Split-Phase Loads	100%
Power Factor Output Range	+/- 1.0 adjustable
Power Factor Range (full-rated power)	+/- 0.85
Internal Battery DC Voltage	50 V
Round Trip Efficiency ^{1,3}	90%
Warranty	10 years

¹Values provided for 25°C (77°F), 3.3 kW charge/discharge power.

²In Backup mode, grid charge power is limited to 3.3 kW.

³AC to battery to AC, at beginning of life.

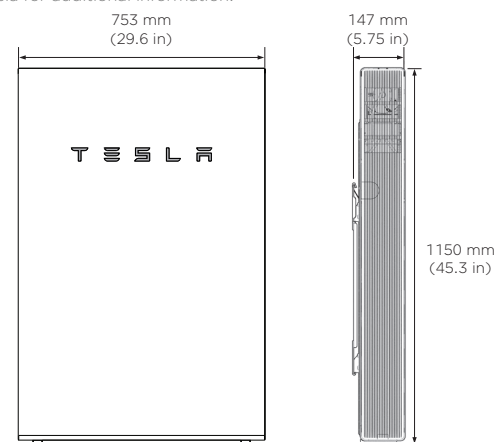
COMPLIANCE INFORMATION

Certifications	UL 1642, UL 1741, UL 1973, UL 9540, IEEE 1547, UN 38.3
Grid Connection	Worldwide Compatibility
Emissions	FCC Part 15 Class B, ICES 003
Environmental	RoHS Directive 2011/65/EU
Seismic	AC156, IEEE 693-2005 (high)

MECHANICAL SPECIFICATIONS

Dimensions ¹	1150 mm x 753 mm x 147 mm (45.3 in x 29.6 in x 5.75 in)
Weight ¹	114 kg (251.3 lbs)
Mounting options	Floor or wall mount

¹Dimensions and weight differ slightly if manufactured before March 2019. Contact Tesla for additional information.

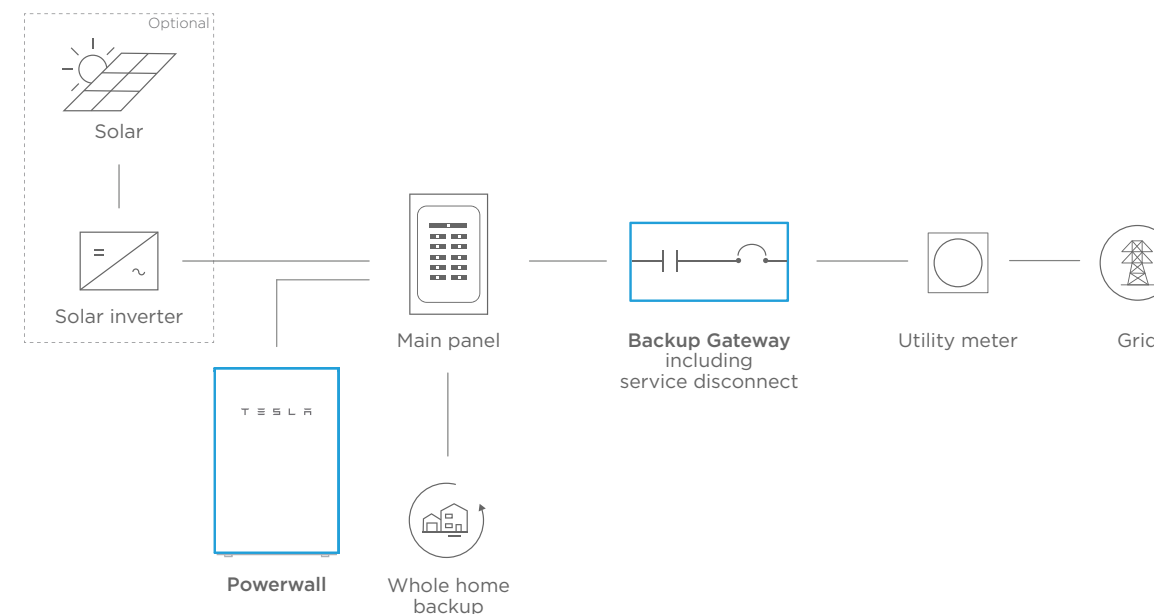


ENVIRONMENTAL SPECIFICATIONS

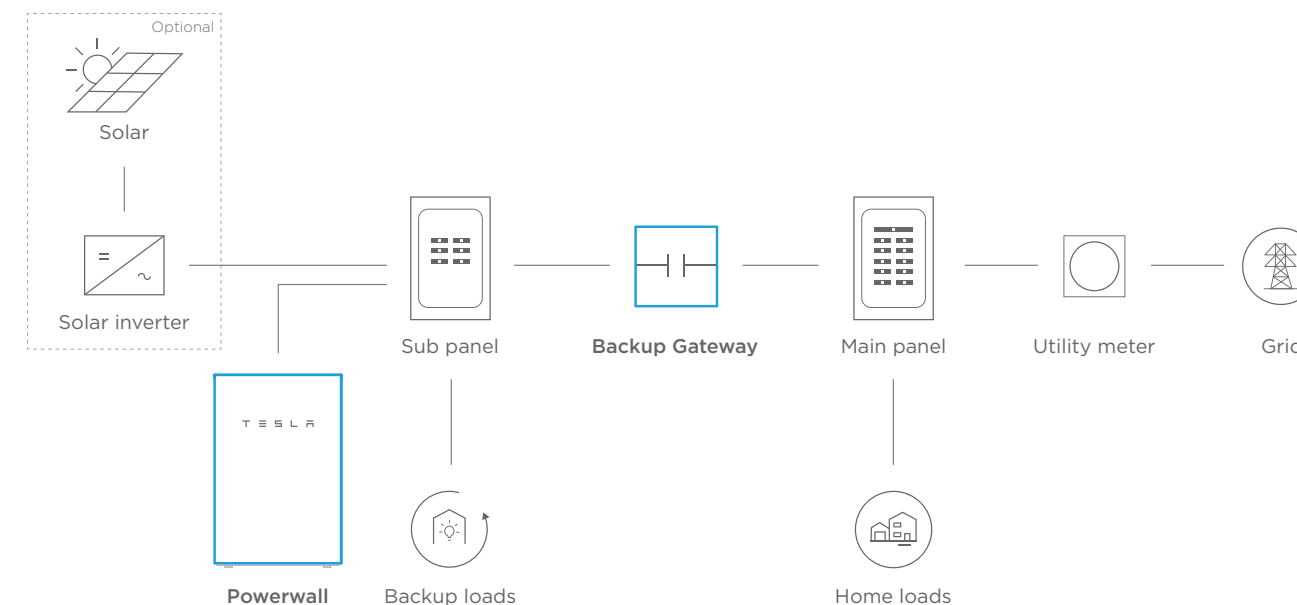
Operating Temperature	-20°C to 50°C (-4°F to 122°F)
Recommended Temperature	0°C to 30°C (32°F to 86°F)
Operating Humidity (RH)	Up to 100%, condensing
Storage Conditions	-20°C to 30°C (-4°F to 86°F) Up to 95% RH, non-condensing State of Energy (SoE): 25% initial
Maximum Elevation	3000 m (9843 ft)
Environment	Indoor and outdoor rated
Enclosure Type	NEMA 3R
Ingress Rating	IP67 (Battery & Power Electronics) IP56 (Wiring Compartment)
Wet Location Rating	Yes
Noise Level @ 1m	< 40 dBA at 30°C (86°F)

TYPICAL SYSTEM LAYOUTS

WHOLE HOME BACKUP



PARTIAL HOME BACKUP



Customer Layout

Final Audit Report


2020-07-23

Created:	2020-07-20
By:	Tesla E-Sign (esignapi@tesla.com)
Status:	Delivered
Transaction ID:	CBJCHBCAABAA30M6H6U5MawwftlbX4gK8x0eolCy_q18

"Customer Layout" History

 Document created by Tesla E-Sign (esignapi@tesla.com)

2020-07-20 - 4:35:41 PM GMT- IP address: 199.120.49.47


 Waiting for delivery by Joshua Burns (redeagle27.jb@gmail.com)

2020-07-20 - 4:35:46 PM GMT

 Document receipt acknowledged by Joshua Burns (redeagle27.jb@gmail.com)

Acknowledgement receipt hosted by Tesla E-Sign (esignapi@tesla.com)

Receipt Acknowledgement Date: 2020-07-23 - 12:30:20 PM GMT - Time Source: server- IP address: 73.0.124.55

 2020-07-23 - 12:30:20 PM GMT